

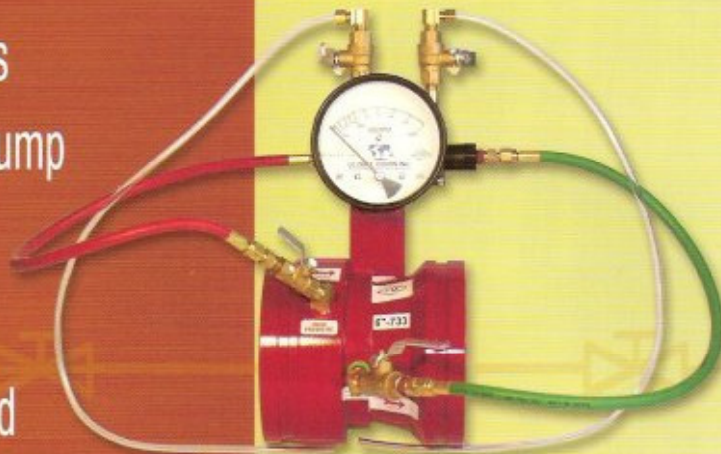


The Industry Leader in Fire Pump Test Meters



GLOBAL  VISION INC.

Global Vision's
Venturi Fire Pump
Test Meter
Technology,
Machining and
Manufacturing processes
meet all top
quality standards.



Venturi Fire Pump Test Meter

VENTURI: 1018 or 1026

Solid Carbon Steel (machined)
Carbon Steel Thick Wall Pipe
and/or Tube (machined)
Material Certs Available
Powder Coating "Red" or
.0005 Zinc Plating

METERS: ALUMINUM 4" Dial, 1/4 MNPT
Connections 304SS Case with
Rubber Ring, Glass Window
buna-n Seal

BALL VALVES: Brass (CA360)

BRASS FITTINGS: Brass (CA360)

HOSES: "Goodyear" Rubber Hose
Brass (CA360) Fittings
(Rating: 750 psi working Pressure)

1 Year Limited Warranty

For more information on standards or product call:

GLOBAL  **VISION** INC.

763-391-0990 • fax 763-391-7668

email: info@globalvisionincorporated.com

8800 Jefferson Highway - Osseo, MN 55369

VENTURI FIRE PUMP FLOW SYSTEM

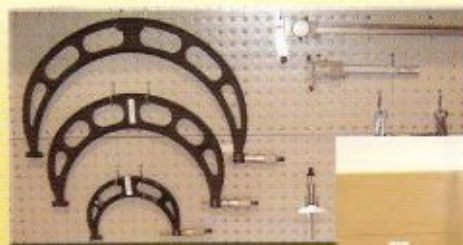
Line Size	Pump GPM	Meter Range Min. & Max GPM	Model Number Grooved	Model Number Butt Weld	Model Number 150# Flanged	Model Number <Threaded> *300# FLANGED*
**1-1/4"	25	12.5 – 50	* 1.25"-25-G	1.25"-25-B	* 1.25"-25-F	1.25"-25-T
**2"	50	25 – 100	* 2"-50-G	2"-50-B	* 2"-50-F	2"-50-T
**2-1/2"	100	50 - 200	2.5"-100-G	2.5"-100-B	2.5"-100-F	*2.5"-100-F3
3"	150	75 – 300	3"-150-G	3"-150-B	3"-150-F	*3"-150-F3
3"	200	100 – 400	3"-200-G	3"-200-B	3"-200-F	*3"-150-F3
4"	250	125 – 500	4"-250-G	4"-250-B	4"-250-F	*4"-250-F3
4"	300	150 – 600	4"-300-G	4"-300-B	4"-300-F	*4"-300-F3
4"	400	200 – 800	4"-400-G	4"-400-B	4"-400-F	*4"-400-F3
4"	450	225 – 900	4"-450-G	4"-450-B	4"-450-F	*4"-450-F3
5"	450	225 – 900	5"-450-G	5"-450-B	5"-450-F	*5"-450-F3
5"	500	250 – 1000	5"-500-G	5"-500-B	5"-500-F	*5"-500-F3
5"	750	375 – 1500	5"-750-G	5"-750-B	5"-750-F	*5"-750-F3
6"	500	250 – 1000	6"-500-G	6"-500-B	6"-500-F	6"-500-F3
6"	750	375 – 1500	6"-750-G	6"-750-B	6"-750-F	6"-750-F3
6"	1000	500 – 2000	6"-1000-G	6"-1000-B	6"-1000-F	6"-1000-F3
6"	1250	625- 2500	6"-1250-G	6"-1250-B	6"-1250-F	6"-1250-F3

* Denotes Non-Stock Item, Please check with factory for availability

** Sizes 1-1/4", 2", & 14" are Not FM Approved per Factory Mutual**

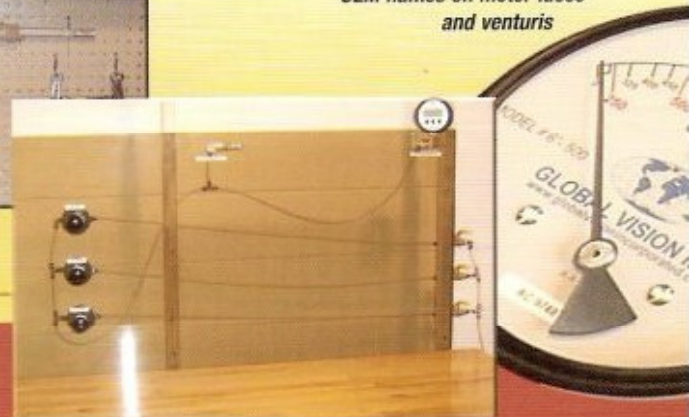


Global Vision is the leader in Flow Technology. Our Mission is to maintain this reputation by providing the highest level of quality and customer satisfaction. We are FM approved ... and our equipment is ISO 17025 certified.



Quality Inspection

OEM names on meter faces and venturis



Meter Testing

VENTURI FIRE PUMP FLOW SYSTEM

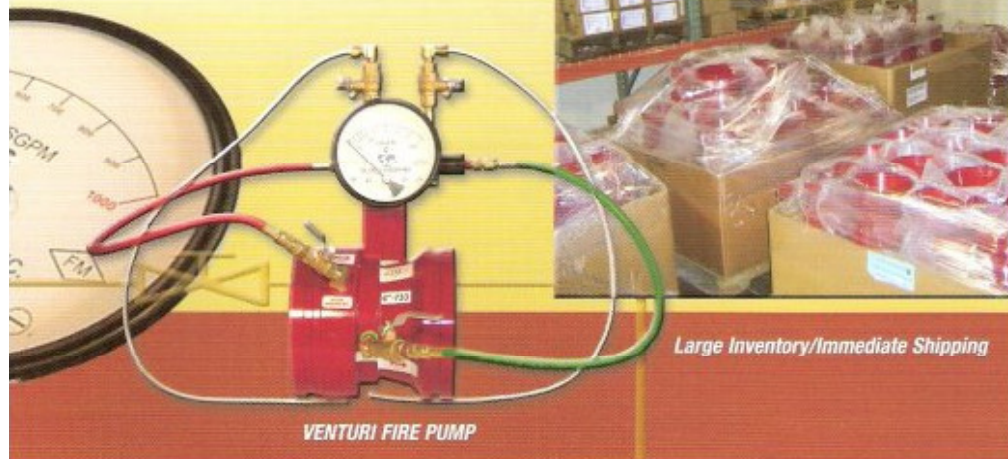
Line Size	Pump GPM	Meter Range Min. & Max GPM	Model Number Grooved	Model Number Butt Weld	Model Number Flanged	Model Number 300# FLANGED
8"	1000	500 – 2000	8"-1000-G	8"-1000-B	8"-1000-F	8"-1000-F3
8"	1250	625 – 2500	8"-1250-G	8"-1250-B	8"-1250-F	8"-1250-F3
8"	1500	750 – 3000	8"-1500-G	8"-1500-B	8"-1500-F	8"-1500-F3
8"	2000	1000 – 4000	8"-2000-G	8"-2000-B	8"-2000-F	8"-2000-F3
8"	2500	1250 – 5000	8"-2500-G	8"-2500-B	8"-2500-F	8"-2500-F3
8"	3000	1500 – 6000	8"-3000-G	8"-3000-B	8"-3000-F	8"-3000-F3
10"	1500	750 – 3000	10"-1500-G	10"-1500-B	10"-1500-F	10"-1500-F3
10"	2000	1000 – 4000	10"-2000-G	10"-2000-B	10"-2000-F	10"-2000-F3
10"	2500	1250 – 5000	10"-2500-G	10"-2500-B	10"-2500-F	10"-2500-F3
10"	3000	1500 – 6000	10"-3000-G	10"-3000-B	10"-3000-F	10"-3000-F3
10"	3500	1750 – 7000	10"-3500-G	10"-3500-B	10"-3500-F	10"-3500-F3
10"	4000	2000 – 8000	10"-4000-G	10"-4000-B	10"-4000-F	10"-4000-F3
10"	4500	2250 – 9000	10"-4500-G	10"-4500-B	10"-4500-F	10"-4500-F3
12"	2500	1250 – 5000	* 12"-2500-G	* 12"-2500-B	* 12"-2500-F	*12"-2500-F3
12"	3000	1500 – 6000	* 12"-3000-G	* 12"-3000-B	* 12"-3000-F	*12"-3000-F3
12"	3500	1750 – 7000	* 12"-3500-G	* 12"-3500-B	* 12"-3500-F	*12"-3500-F3
12"	4000	2000 – 8000	* 12"-4000-G	* 12"-4000-B	* 12"-4000-F	*12"-4000-F3
12"	4500	2250 – 9000	* 12"-4500-G	* 12"-4500-B	* 12"-4500-F	*12"-4500-F3
12"	5000	2500 - 10000	12"-5000-G	12"-5000-B	12"-5000-F	12"-5000-F3
**14"	4000	2000 – 8000	*14"-4000-G	*14"-4000-B	*14"-4000-F	*14"-4000-F3
**14"	4500	2250 – 9000	*14"-4500-G	*14"-4500-B	*14"-4500-F	*14"-4500-F3
**14"	5000	2500 - 10000	*14"-5000-G	*14"-5000-B	*14"-5000-F	*14"-5000-F3
**14"	6000	3000- 12000	*14"-6000-G	*14"-6000-B	*14"-6000-F	*14"-6000-F3

* Denotes Non-Stock Item, Please check with factory for availability

** Sizes 1-1/4", 2", & 14" are Not FM Approved per Factory Mutual**



Global Vision your first choice for all your flow needs:



- **First rate customer service**
- **On-time deliveries**
- **Outstanding pricing**

Large Inventory/Immediate Shipping

VENTURI FIRE PUMP

GVI FIRE PUMP METERS — DIMENSIONAL DATA

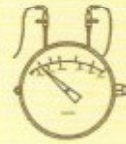
DP SERIES

CARBON STEEL

CONSTRUCTION & SPECIFICATIONS

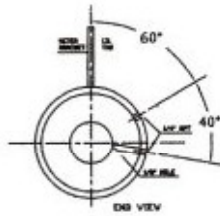
MATERIALS: MACHINED 1018 OR 1026 CARBON STEEL
 VALVES: 1/4" BRASS BALL
 BRASS FITTING: CA360
 FLANGE OPT: 150# ANSI B 16.5
 300# ANSI B 16.5
 ID TAG: POLYCARBONATE

METER DATA

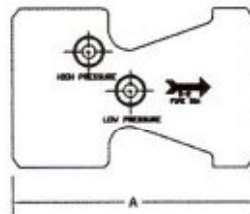


CONSTRUCTION: ALUMINUM BODY
 OPERATION: DIAPHRAGM (BUNA CONVOLUTED)
 ACCURACY: 2% FULL SCALE
 TEMPERATURE: 180°F / 80°C
 PRESSURE: 500 PSIG - 3450 KPA
 APPROX. WEIGHT: 3.75 LBS (1.7 KGS)
 4" DIAL STANDARD - 6" DIAL AVAILABLE

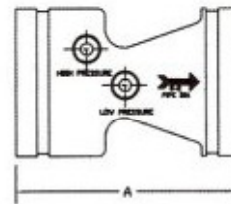
MATERIALS AVAILABLE: STAINLESS STEEL, BRASS, ALUMINUM, MONEL, VARIOUS PLASTICS,
 EPOXY COATED, AND MANY OTHERS. PLEASE CONSULT FACTORY.



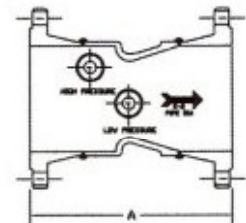
BUTT WELD / GROOVED



BUTT WELD



GROOVED

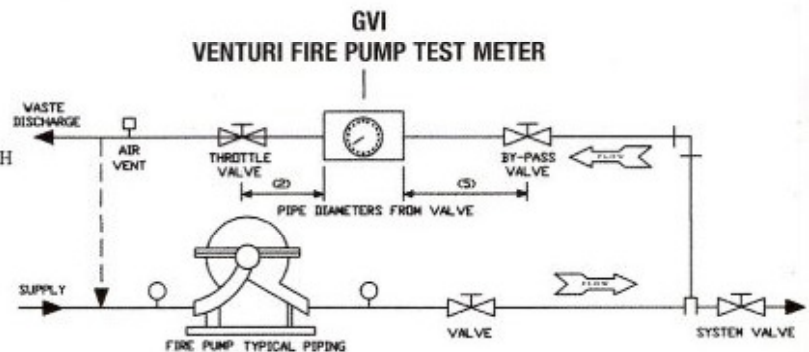


FLANGED

SIZE	PRESSURE 500 PSI		PRESSURE 275 PSI		PRESSURE 500 PSI	
	BUTT WELD & GROOVED		150 # FLANGED		300# FLANGED	
	"A" DIM	APPROX. WEIGHT	"A" DIM	APPROX. WEIGHT	"A" DIM	APPROX. WEIGHT
1-1/4"	4.875	2 lbs.	—	—	—	—
2"	5.000	3.5 lbs.	—	—	—	—
2-1/2"	4.000	5 lbs.	9.250	21 lbs.	10.000	28 lbs.
3"	4.000	6 lbs.	3.975	30 lbs.	10.25	36 lbs.
3-1/2"	—	—	—	—	—	—
4"	5.375	10 lbs.	11.375	40 lbs.	12.125	60 lbs.
5"	6.000	20 lbs.	13.000	58 lbs.	13.750	84 lbs.
6"	7.000	22 lbs.	14.000	70 lbs.	14.750	106 lbs.
8"	7.250	45 lbs.	15.250	107 lbs.	16.000	195 lbs.
10"	8.000	61 lbs.	16.000	165 lbs.	17.250	243 lbs.
12"	12.000	128 lbs.	21.000	288 lbs.	22.250	408 lbs.
14"	14.000	—	—	—	—	—
16"	28.000	—	—	—	—	—

OPERATING INSTRUCTIONS

- CLOSE SYSTEM VALVE.
- OPEN SYSTEM BY-PASS VALVE AND THROTTLE VALVE.
- PURGE METER LOCATED ON VENTURI AS FOLLOWS:
 - OPEN SHUT-OFF VALVES & VENT VALVES.
 - WHEN A STEADY STREAM OF WATER IS PASSING THROUGH EACH PLASTIC HOSE, THE METER IS PURGED OF AIR.
 - CLOSE VENT VALVE AFTER PURGING.
- START FIRE PUMP, READ METER IN GPM
- REFER TO PUMP GPM REQUIREMENT AND ADJUST THROTTLE VALVE FOR THIS REQUIREMENT.
- AFTER TEST OPEN SYSTEM VALVE AND CLOSE SYSTEM BY-PASS AND THROTTLE VALVES.



Global Vision Incorporated 763-391-0990 • fax 763-391-7668

email: info@globalvisionincorporated.com

8800 Jefferson Highway - Osseo, MN 55369



GLOBAL VISION INC.

763-391-0990 • fax 763-391-7668

email: info@globalvisionincorporated.com

8800 Jefferson Highway - Osseo, MN 55369